

Quick Start Guide

GV-Recording Server V1.3



Thank you for purchasing GV-Recording Server. This guide is designed to assist the new user in getting immediate results from the GV-Recording Server. For advanced information on how to use the GV-Recording Server, please refer to *GV-Recording Server User's Manual* on Software DVD.



© 2016 GeoVision, Inc. All rights reserved.

Under the copyright laws, this manual may not be copied, in whole or in part, without the written consent of GeoVision.

Every effort has been made to ensure that the information in this manual is accurate.

GeoVision, Inc. makes no expressed or implied warranty of any kind and assumes no responsibility for errors or omissions. No liability is assumed for incidental or consequential damages arising from the use of the information or products contained herein. Features and specifications are subject to change without notice.

GeoVision, Inc.

9F, No. 246, Sec. 1, Neihu Rd.,

Neihu District, Taipei, Taiwan

Tel: +886-2-8797-8377

Fax: +886-2-8797-8335

<http://www.geovision.com.tw>

Trademarks used in this manual: *GeoVision*, the *GeoVision* logo and GV series products are trademarks of GeoVision, Inc. *Windows* and *Windows XP* are registered trademarks of Microsoft Corporation.

May 2016

Contents

1. Introduction	1
1.1 Packing List	1
1.2 Software License	1
2. System Requirements	2
2.1 Minimum System Requirements	2
2.2 Compatible GV-Software	3
2.3 Recommended Hard Disk Requirements.....	4
2.4 Suggested Motion Detection Frequency	4
2.5 Network Requirements	5
3. Introduction	7
3.1 Installing the GV-Recording Server.....	7
3.2 Starting the GV-Recording Server.....	7
4. Connecting to IP Devices.....	9
4.1 Adding IP Video Devices	9
4.2 Assigning Storage Paths.....	10
4.3 Starting Service.....	11
5. Active and Passive Mode.....	13
5.1 Passive Connection	13
6. Distributing to Clients	16
6.1 Web Interface through User Account	16
6.2 Connecting with the GV-System	17
6.3 Connecting with the Multi View	19
6.4 Connecting with the GV-Control Center	20
6.5 Connecting with Multicast	21
6.6 Connecting with the GV-VMS	22
6.7 Connecting with the Remote ViewLog	24
6.8 Connecting with the GV-Mobile Server	26

1. Introduction

Welcome to the GV-Recording Server Quick Start Guide. This quick guide will guide you through the basic installation of GV-Recording Server, connecting to IP video devices and distributing to clients. For the detailed user manual, see *GV-Recording Server User Manual*.

1.1 Packing List

- GV-USB Dongle

1.2 Software License

GV-Recording Server (full functions available):

Free License	N/A
Max. License	128 channels
Increment for Each License	<ol style="list-style-type: none">1. GV-IP video devices only: 8, 16, 32, 36, 40, 44, 48, 52, 56, 60, 64, 68, 72, 76, 80, 84, 88, 92, 96, 100, 104, 108, 112, 116, 120, 120, 124, 128 IP channels.2. Third-party IP devices (Includes GV-IP video devices): 8, 16, 32, 36, 40, 44, 48, 52, 56, 60, 64, 68, 72, 76, 80, 84, 88, 92, 96, 100, 104, 108, 112, 116, 120, 124, 128 IP channels.
Optional Combinations	N/A
Dongle Type	Internal

GV-Video Gateway Only (without recording functions):

Free License	N/A
Max. License	128 channels
Increment for Each License	N/A
Optional Combinations	N/A
Dongle Type	Internal or external

Note: To see how to install the internal GV-USB Dongle, refer to *Appendix D. Install the Internal USB Dongle* in the *GV-Recording Server User Manual*.

2. System Requirements

2.1 Minimum System Requirements

Servers meeting the minimum system requirements have the capacity to perform one of the following:

- Receive up to 128 channels and transmit up to 300 channels with each channel set to 1280 x 1024 resolution, 30 fps and H.264 codec. OR
- Receive up to 128 channels and transmit up to 300 channels with each channel set to 1920 x 1080 resolution, 30 fps and H.264 codec. OR
- Receive up to 128 channels and transmit up to 300 channels with each channel set to 2048 x 1536 resolution, 20 fps and H.264 codec.

OS	64-bit Windows 7 / 8 / 8.1 / 10 / Server 2008 R2 / Server 2012 R2
CPU	Core i7 2600, 3.4 GHz
Memory	<ul style="list-style-type: none">● GV-Video Gateway: 6 GB Dual Channels● GV-Recording Server: 16 GB Dual Channels
Hard Disk	1 GB (for installation)
Browser	<ul style="list-style-type: none">● Internet Explorer 8 to 11● Firefox 26.0● Google Chrome 31.0.1650.63● Safari 5.1.7
LAN	Gigabit Ethernet x 1~6
Software	.Net Framework 3.5
Hardware	<ul style="list-style-type: none">● GV-Video Gateway: Internal or external GV-USB Dongle● GV-Recording Server: Internal GV-USB Dongle

Note:

1. Gigabit Ethernet x 6 is required in order to receive 128 channels and transmit up to 300 channels with each channel set to 1920 x 1080 resolution, 30 fps and H.264 codec. Refer to *Network Requirement* in the Quick Start Guide,
 2. The 1 GB hard disk requirement is for installation of GV-Recording Server only. To see the hard disk requirements for recording, refer to *Recommended Hard Disk Requirement* in the Quick Start Guide.
 3. The browsers supported by Recording Server are Internet Explorer, Firefox, Google Chrome, and Safari. You can access single live view by using Firefox and Internet Explorer. Only Internet Explorer is supported for playing back recorded files.
-

2.2 Compatible GV-Software

- **GV-System, Multi View, Multicast:** version 8.5.6 or later.
- **GV-Control Center, GV-GIS:** version 3.0 or later.
- **GV-Mobile Server:** version 1.3 or later.
- **GV-Vital Sign Monitor:** version 8.5.9 or later.
- **GV-Backup Center:** version 1.1.2 or later.
- **GV-Redundant / Failover Server:** version 1.1.0.0 or later
- **GV-VMS:** version 14.10 or later
- **GV-Edge Recording Manager:** version 1.0 or later
- **GV-Eye:** version 2.0 or later

Note: The GV-Recording Server cannot be installed with the GV-DVR/NVR/VMS on the same PC.

2.3 Recommended Hard Disk Requirements

The recommended hard disk requirements are listed as below.

Res.	FPS	Codec	Motion	Round-the-Clock		
			Max. channel per hdd	Max. ch per hdd and required hdd capacity	Hdd capacity required (Recording 128 ch, 24 hr)	Hdd needed for 24 hr recording (7200RPM hdd, SATA3)
1.3 MP	30 fps	H.264	10 ch	32 ch / 2.5 TB	10 TB	3 TB hdd x 4
		JPEG	N/A	8 ch / 2.7 TB	43.2 TB	3 TB hdd x 16
2.0 MP	30 fps	H.264	7 ch	21 ch / 2.2 TB	13.5 TB	3 TB hdd x 7
		JPEG	N/A	5 ch / 2.5 TB	64 TB	3 TB hdd x 26
3.0 MP	20 fps	H.264	10 ch	32 ch / 3 TB	12 TB	3 TB hdd x 4
		JPEG	N/A	4 ch / 2 TB	64 TB	3 TB hdd x 32

Note: The number of hard drive required varies depending on the write speed of the hard drive and the hard disk size required varies depending on the recorded file size and bitrate. The recommended hard disk requirement is just for your reference.

2.4 Suggested Motion Detection Frequency

The numbers of channels supported vary depending on the frequency of motion detection. When using short intervals between motion detection, detection is more sensitive, but CPU usage increases and the numbers of channels supported decrease. Below is the suggested time interval for motion detection and the numbers of channels supported at that interval. The default time interval setting is 1000 milliseconds.

Resolution	Motion Detection Interval	Receiving	Transmitting
1.3 MP (1280 x 1024)	500 milliseconds	128 ch	240 ch
2.0 MP (1920 x 1080)	500 milliseconds	90 ch	180 ch
3.0 MP (2048 x 1536)	250 milliseconds	55 ch	111 ch
5.0 MP (2560 x 1920)	250 milliseconds	45 ch	90 ch

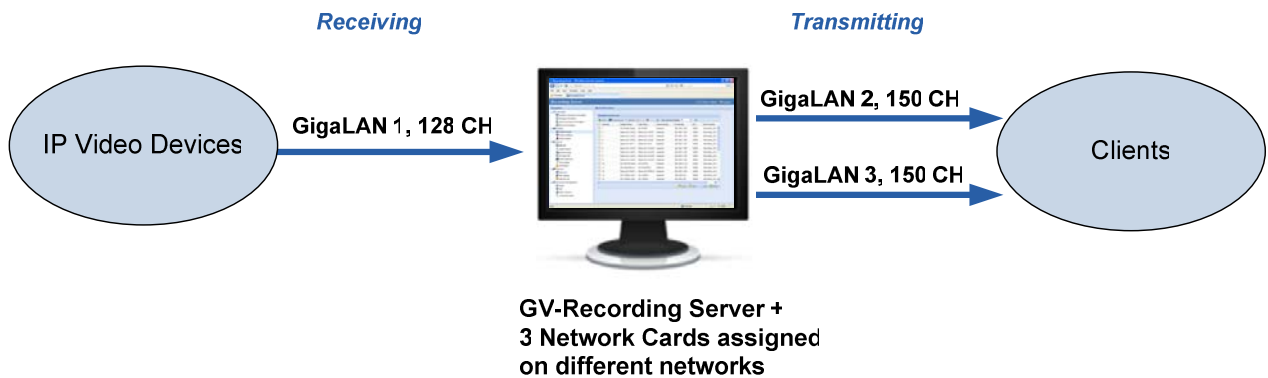
2.5 Network Requirements

The number of Gigabit network cards required to receive 128 channels and transmit 300 channels are listed below according to the resolution of the source video.

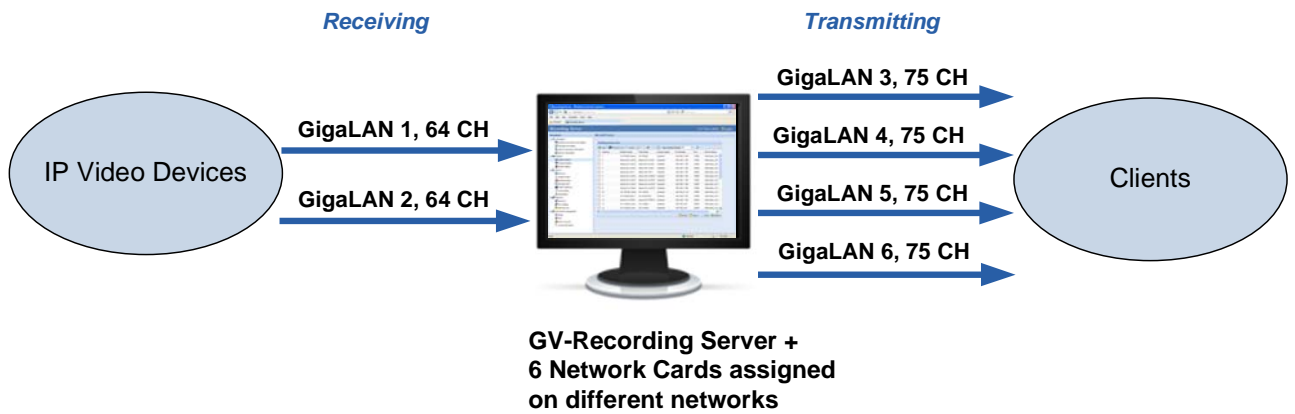
Resolution	FPS	Codec	Gigabit Network Cards Required	
			Receiving 128 ch	Transmitting 300 ch
1.3 MP	30 fps	H.264	Gigabit network card x 1 (up to 128 ch per card)	Gigabit network card x 2 (up to 150 ch per card)
2.0 MP	30 fps	H.264	Gigabit network card x 2 (up to 64 ch per card)	Gigabit network card x 4 (up to 75 ch per card)
3.0 MP	20 fps	H.264	Gigabit network card x 1 (up to 128 ch per card)	Gigabit network card x 2 (up to 150 ch per card)

The deployment of Gigabit connections for transmitting and receiving is suggested as illustrated below. Ensure to run every Gigabit connection on a different network in order to reduce the lag on any network connection.

1.3 MP / 3 MP Source Video



2 MP Source Video




3. Introduction

3.1 Installing the GV-Recording Server

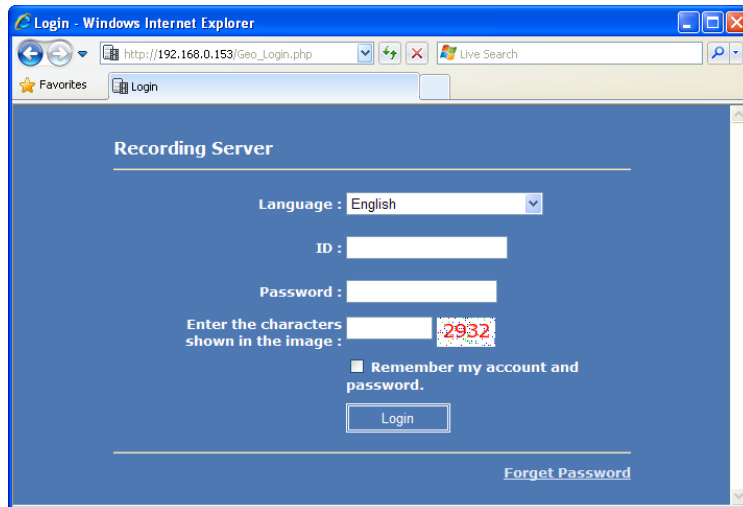
1. Insert GV-USB Dongle to a dedicated computer or server and go to the Software Download and Upgrading page of Geovision Website:
http://www.geovision.com.tw/english/5_8_VMS.asp.
2. To install USB driver, select the **Video Management Software** tab, find the **Driver** section and click the **Download** icon of **GV-Series Card Driver / GV-USB Devices Driver**.
3. To install GV-Recording Server, select the **Video Management Software** tab, find the **Primary Applications** section and click the **Download** icon of **GV-Recording Server / GV-Video Gateway**.
4. To download and install .Net Framework 3.5, go to:
<http://www.microsoft.com/en-us/download/details.aspx?id=21>.

Note: For Brazil, refer to the User's Manual for how to install GV-Recording Server from the Software DVD.

3.2 Starting the GV-Recording Server

1. Right-click the GV-Recording Server icon  from the system tray, select **Login**, and type the login name and password. (Default name and password: **admin**)
2. Right-click the GV-Recording Server icon and select **Start Service**.

3. After the GV-Recording Server icon turns green, right-click the icon again and select **Access Web Interface**. The Web interface login page appears.



4. Type the **ID** and **Password**. The default login name and password for the Administrator are **admin**.
5. Type the verification number shown in the image.
6. Click **Login**. The GV-Recording Server Web interface is now displayed.

For more details, see *2.2 Starting the GV-Recording Server* in the *GV-Recording Server User Manual*.

Note:

1. To enable the updating of images in Microsoft Internet Explorer, you must set your browser to allow ActiveX Controls and perform a one-time installation of GeoVision's ActiveX component onto your computer.
 2. If the GV-Recording Server is installed behind a firewall or router, you may need to open these default ports: HTTP port 80, server connection port (Active connection port) 11000 and Passive connection port 50000, remote playback (Remote ViewLog) port 5552.
-

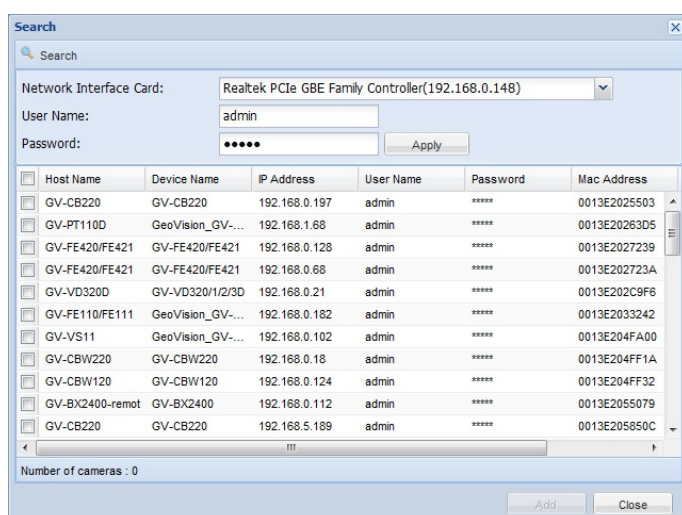
4. Connecting to IP Devices

When logging in the GV-Recording Server for the first time, the Install Wizard will be prompted to help you add IP video devices, assign storage path to store recorded files and start connections to IP devices.

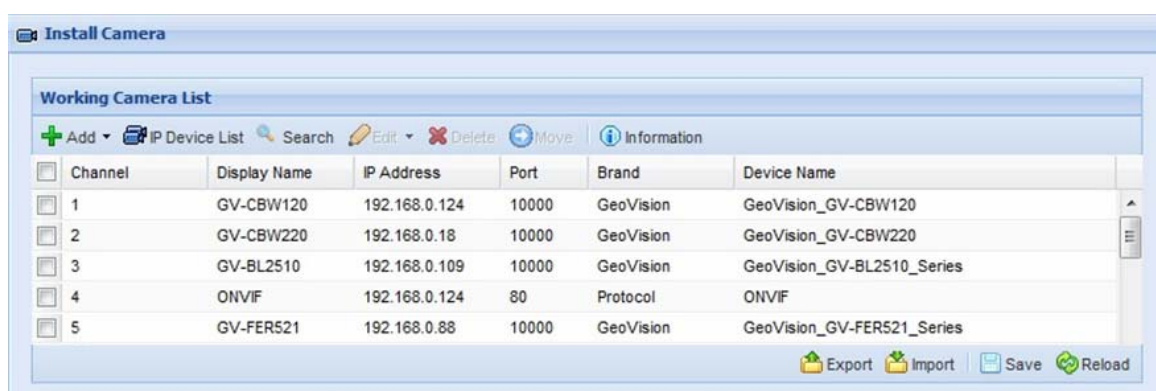
Note: To start the Install Wizard manually, click **Install Wizard** under the Server section in the left menu.


4.1 Adding IP Video Devices

1. When the Install Wizard is launched, the GV-Recording Server automatically detects available IP video devices under LAN. This dialog box appears.




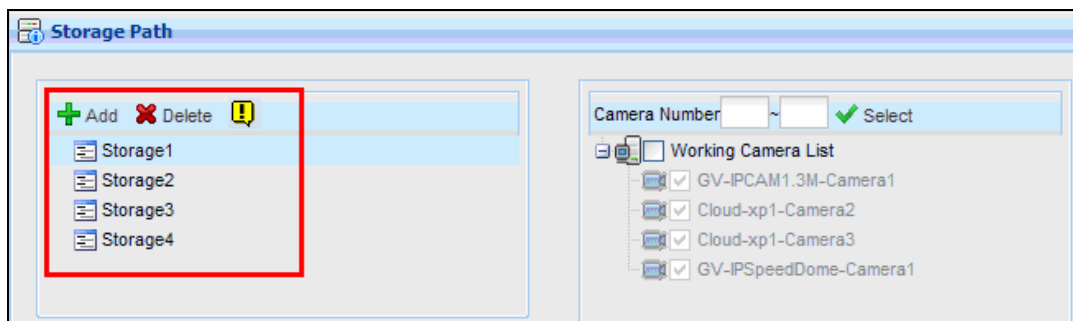
2. If you have multiple network interface cards, use the drop-down list to select one and click **Search**.
3. Select the IP video devices you want to establish active connection with.
4. Click **Add** and map the device to a channel. The Working Camera List appears.



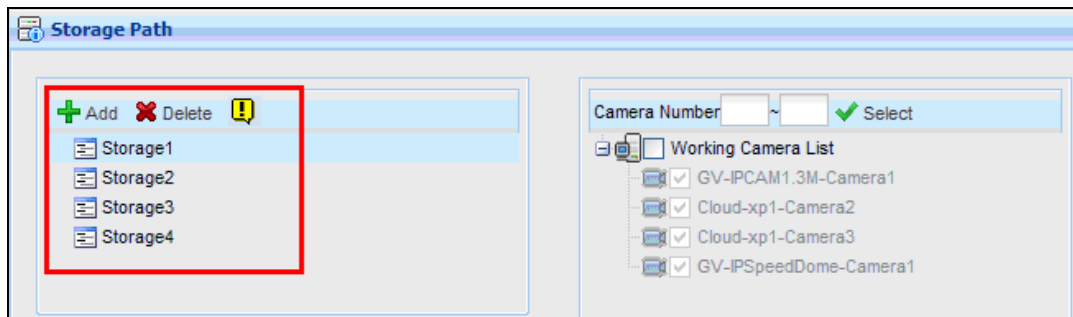
5. The GV-Recording Server will try to connect to the devices using **admin** as the default ID and password. To connect with other ID and password, select the camera, click the **Edit** button  and select **Host Setting**. In the dialog box, select **Change ID and Password**, type a new ID and password and click **OK**.
6. Click **Save** and click **Next Page**.

4.2 Assigning Storage Paths

1. In the Storage Path page, click the **Add** button  to add a new storage folder in a different disk drive, or select an existing storage folder.



2. Use the default storage path, or click the **Add** button to select a new storage path.



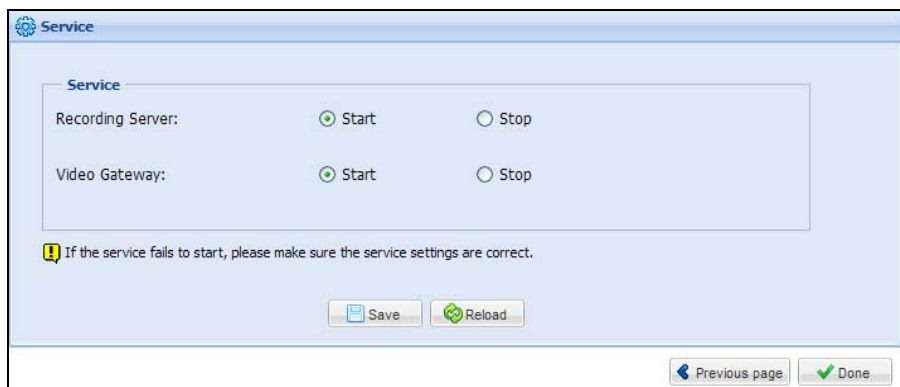
3. In the Working Camera List section, type a range of camera number and click the **Select** button. You can also select the **Working Camera List** checkbox to select cameras individually. Videos of the cameras selected will be recorded to the storage path indicated.
4. To specify a recycle threshold, select **Recycle** and type a minimum free space. When the remaining free space falls below the threshold, the oldest files will be overwritten.
5. Click **Save** and click **Next Page** at the lower-right corner of the page.

Note:

1. When a camera begins recording, the shortcut path of the respective camera will be created, linking to the storage path of its recorded videos. By default, the shortcut folders are located at C:\Programs Files (x86)\RecordingServer\shortcuts.
2. For the suggested maximum number of channels in a hard disk, see *Recommended Hard Disk Requirements* in the Quick Start Guide.
3. You can select a network drive as storage path, e.g. the drive from an iSCSI or a NAS system.

4.3 Starting Service

1. In the Service page, to be able to receive and record IP channels, select **Start** for Recording Server.
2. To enable the video gateway to transmit video to clients, select **Start** for Video Gateway.



3. Click **Save** and click **Done**. The Camera Connection Information page appears and shows the connection status of the camera added.

Channel	Display Name	IP Address	Status	Write Speed	Start Time	Elapsed Time	Record Policy	Firmware Version	GV POE Switch
001	Joe-IPCAM1.3M	192.168.1.116	Recording	251.9Kbps	2015/08/31 16:0...	00:02:28	Round the Clock	v2.03 2015-05-09	0013E2FC2691
002	GV-VS2410(Ca...	192.168.6.48	Connect Failed				Round the Clock		
003	GV-BX520D/BX...	192.168.7.84	Disconnect				Round the Clock		
004	GV-BX12201	192.168.1.106	Login failed				Round the Clock		
005	GV-BX120D/BX...	192.168.4.33	Recording	806.0Kbps	2015/08/28 13:5...	00:01:40	Round the Clock	v3.03 2015-06-24	
007	GV-BX5300	192.168.6.49	Connecting				Round the Clock		

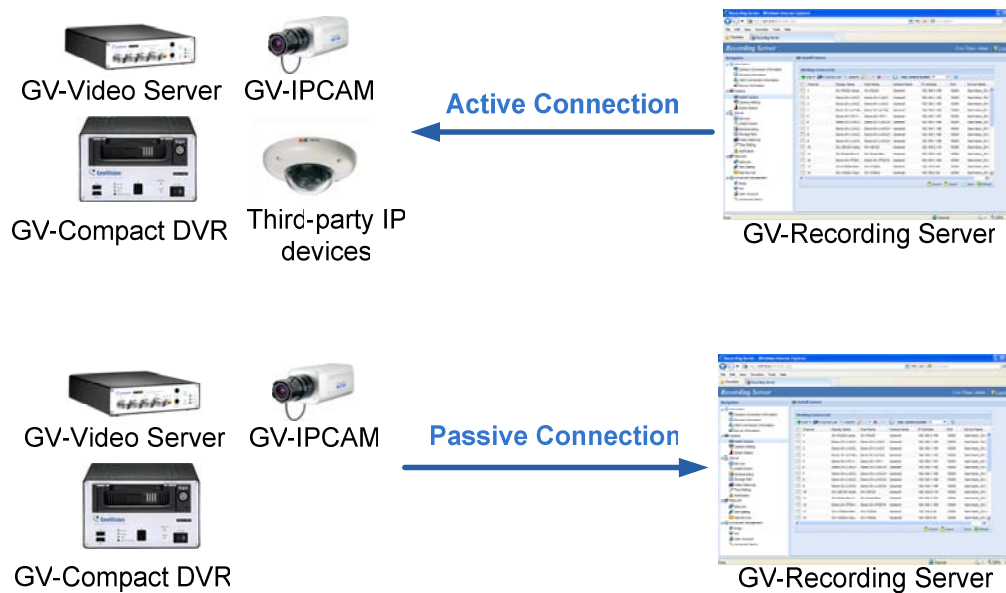
Status : Loading data succeeded. 2015/8/28 1:51:54 PM

After adding camera, refer to 5.2.2 *Camera Setting* in the *GV-Recording Server User Manual* to see how to customize camera settings such as setting video attributes, recording policy and recording schedule.

Note: The GV-Recording Server is compatible with the following third-party IP device brands: **Arecont Vision, AXIS, HikVision, Panasonic, Sony, VIVOTEK** and protocols: **ONVIF, PSIA, RTSP**. To see the supported models for each brand, refer to the Supported IP Camera List at http://www.geovision.com.tw/english/4_21.asp. To see how to add IP devices using protocols, refer to *5.2.1 Install Camera* in the *GV-Recording Server User Manual*.

5. Active and Passive Mode

There are two ways to establish connection with IP video devices, **active connection** where GV-Recording Server initiates the connection and **passive connection** where the GV-IP video device initiates the connection. IP devices added with the Install Wizard introduced in section 3 is using active connection.



Note:

1. Passive connection is only supported for GV-IP devices.
 2. Passive connection is not currently supported for GV-IP devices to GV-Failover / Redundant Server.
 3. Two-way audio communication is only supported for GV-IP devices through active connection.
-

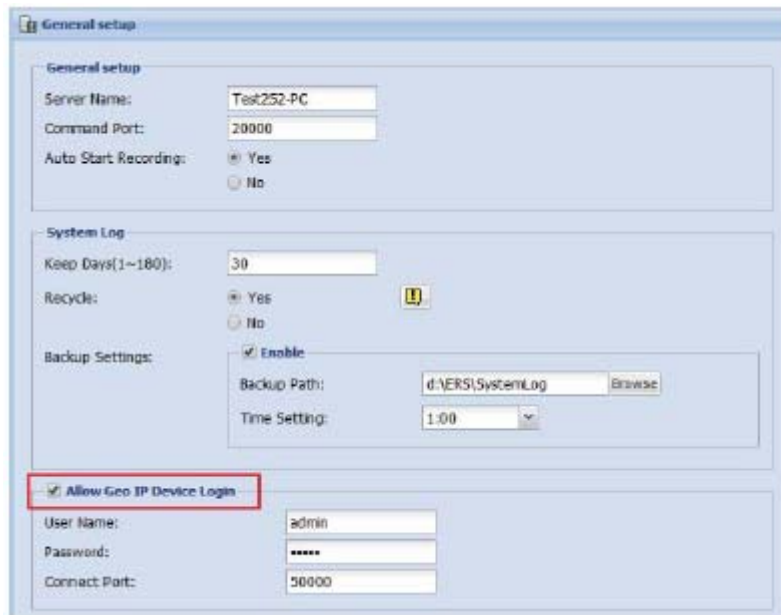
5.1 Passive Connection

To create passive connection, the GV-Recording Server must be configured to allow connections from GV-IP video devices.

To allow passive connection on GV-Recording Server:

1. In left menu, select **General Setup**.

2. Select **Allow Geo IP Device Login**. The default ID and Password to log onto the GV-Recording Server is **admin**, and the default port value is 50000. If you change the ID and Password, they must match the same settings configured on the GV-IP device.

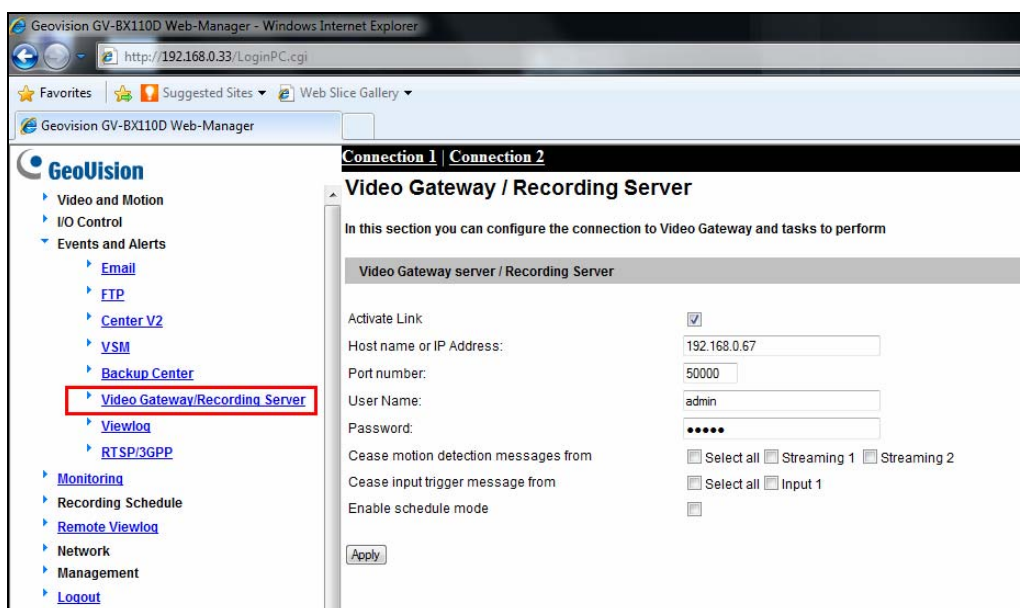


4. Click **Save**.

To access GV-Recording Server on GV-IP devices:

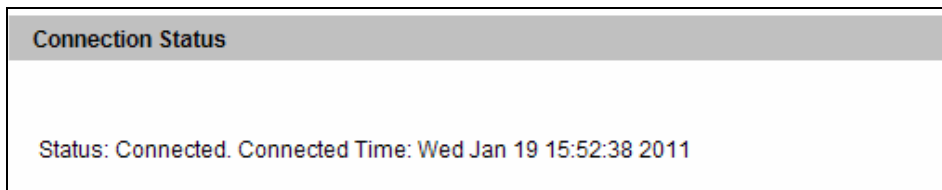
The GV-IP device must also be configured to access the GV-Recording Server.

1. Access the **Video Gateway / Recording Server** setting page on the Web interface of the GV-IP device.



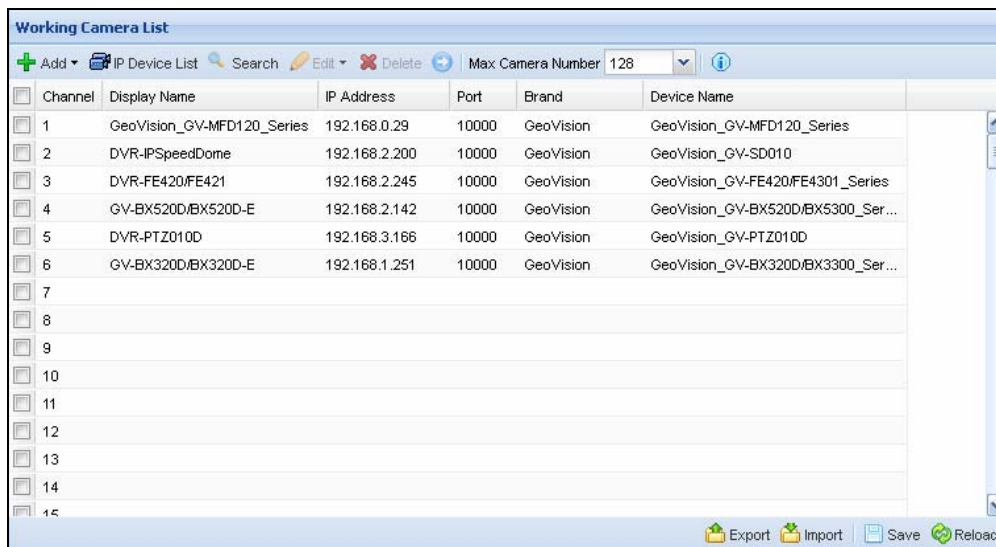
2. Select **Activate Link**.

3. Type IP address or domain name of the GV-Recording Server.
4. Keep default port number as 50000. Otherwise modify the port number to match the connect port specified in General Setup page on the GV-Recording Server.
5. Type **User Name** and **Password** to log onto the GV-Recording Server. These user name and password must match the settings configured on the GV-Recording Server. The default values for both login username and password are **admin**.
6. Click **Apply** to start connection. When the connection is established, the following message will be displayed at the bottom of the Web interface.



To start passive connection on GV-Recording Server:

1. On the GV-Recording Server, select **Install Camera** in the left menu. This dialog box appears.



2. Click the **IP Device List** button on the Working Camera List. The passive connection is listed in the **Host List**.
3. Click **Add** and select a channel. The IP device will be added to the Working Camera List.
4. Click **Save**.
5. In the left menu, click **Service** and select **Start** to enable the Recording Server and Video Gateway services.
6. Click **Save** to start services.

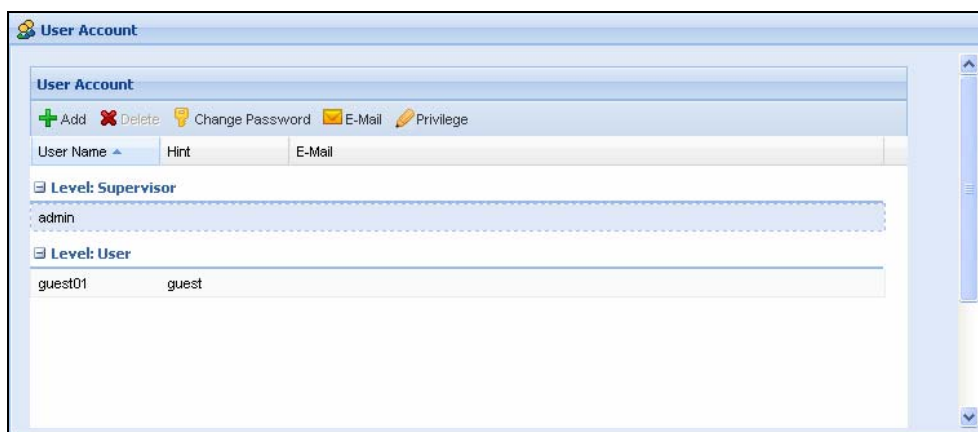
6. Distributing to Clients

The GV-Recording Server can simultaneously transmit up to 300 channels to clients. User accounts can be created for clients to access GV-Recording Server through Web interface. In addition, GV-System, Multi View, GV-VMS, and GV-Control Center can be configured to receive streaming from GV-Recording Server.

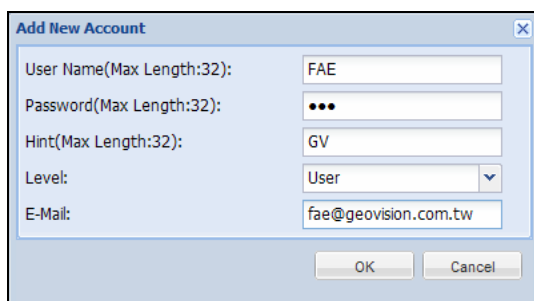
6.1 Web Interface through User Account

You can create up to 1000 User and Supervisor accounts to access GV-Recording Server. The Supervisor accounts have full access to GV-Recording Server, and you can set up different level of access rights for the User accounts.


1. In the left menu, click **User Account**. This dialog box appears.

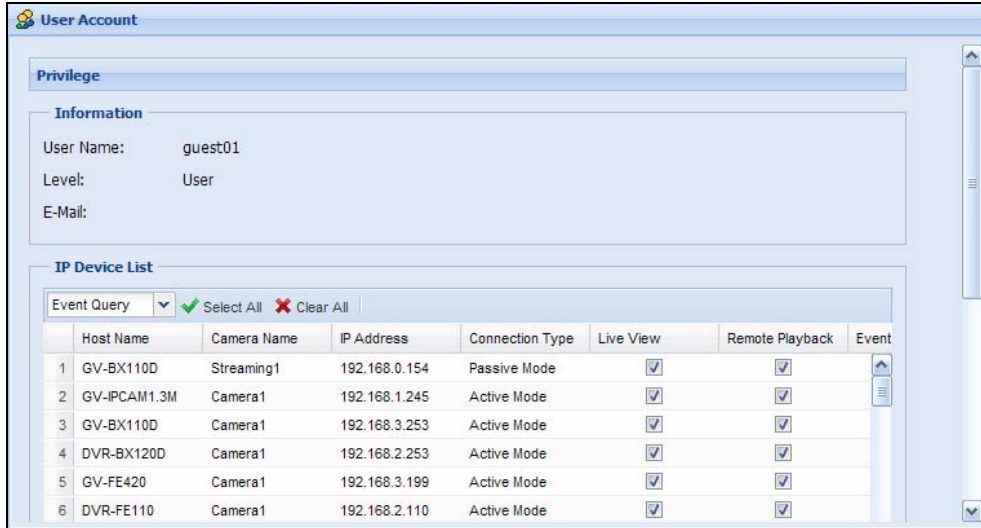


2. Click the **Add** button . This dialog box appears.



3. Type the **User Name**, **Password** and a password **Hint** for the account.
4. Use the **Level** drop-down list to select **Supervisor** or **User**.
5. Type an e-mail address for the account. When you forget the password, the password can be sent to your e-mail account using the Forget Password link in the login page.

- Click **OK** to return to the User Account List.
- To set access rights, select a user account and click **Privilege** . The cameras listed in the IP Device List are displayed.



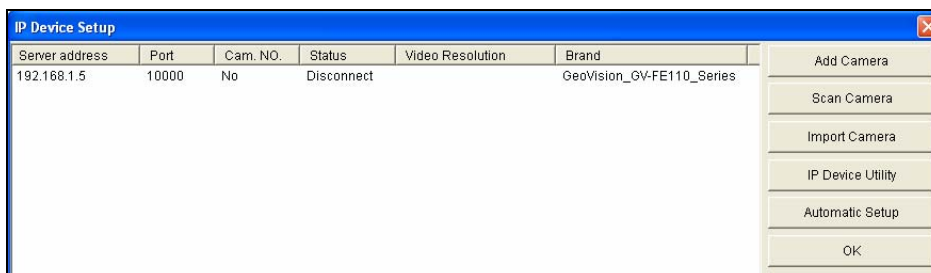
- Select the checkboxes to allow the user to access the **Live View**, **Remote Playback** and **Event Query** of the camera.
- To access the Web interface in User Mode, type the user account's User Name and Password in the GV-Recording Server login page.

For details on User Mode, see *Chapter 6 User Mode* in the *GV-Recording Server User Manual*.

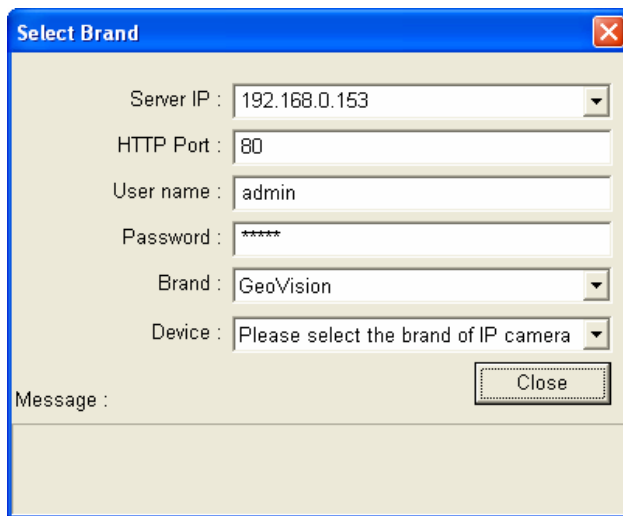
6.2 Connecting with the GV-System

You need to configure the GV-System to access video streaming from the GV-Recording Server. You can find the GV-System from the Software DVD. Click **2. Install GeoVision Primary Applications** to access the installation program.

- On the main screen of GV-System, click the **Configure** button, select **System Configure**, select **Camera Install** and select **IP Camera Install**. This dialog box appears.



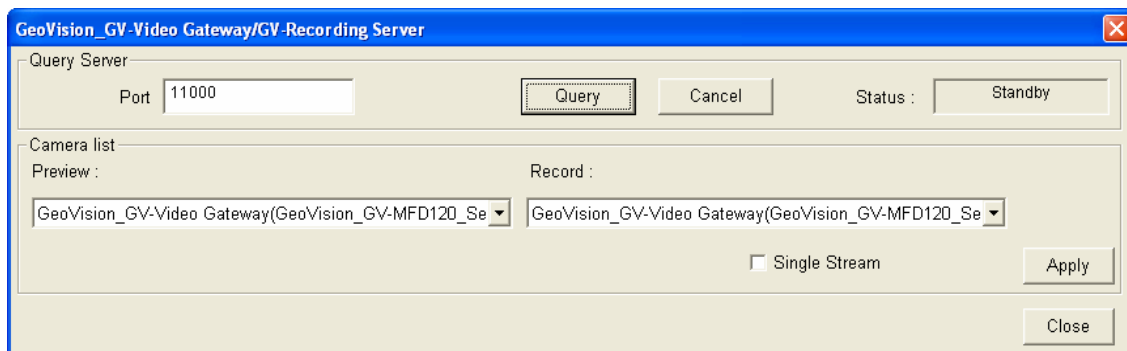
- Click the **Add Camera** button. This dialog box appears.



The 'Select Brand' dialog box contains the following fields and controls:

- Server IP : 192.168.0.153 (dropdown menu)
- HTTP Port : 80 (text input)
- User name : admin (text input)
- Password : ***** (password input)
- Brand : GeoVision (dropdown menu)
- Device : Please select the brand of IP camera (dropdown menu)
- Message : (empty text area)
- Close (button)

- Type the IP address or domain name of the GV-Recording Server. Keep default HTTP port as 80 or change to match the HTTP port configured in GV-Recording Server. Type the client's username and password. Select **GV-Video Gateway / GV-Recording Server** from the **Device** drop-down list. This dialog box appears.

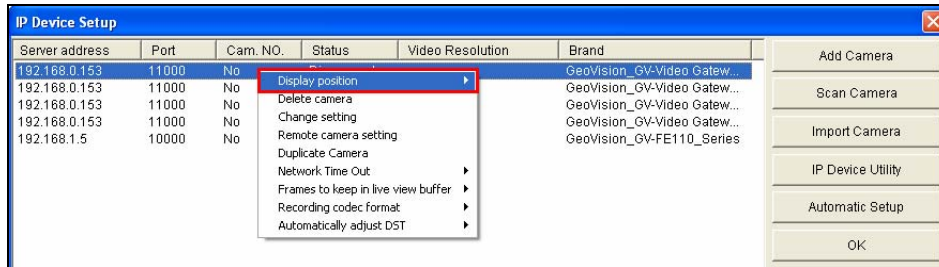


The 'GeoVision_GV-Video Gateway/GV-Recording Server' dialog box contains the following sections and controls:

- Query Server** section:
 - Port : 11000 (text input)
 - Query (button)
 - Cancel (button)
 - Status : Standby (text label)
- Camera list** section:
 - Preview : GeoVision_GV-Video Gateway(GeoVision_GV-MFD120_Se (dropdown menu)
 - Record : GeoVision_GV-Video Gateway(GeoVision_GV-MFD120_Se (dropdown menu)
 - ☐ Single Stream (checkbox)
 - Apply (button)
 - Close (button)

- Keep the default communication port of GV-Recording Server as 11000, or modify the value to match the TCP/IP port on the GV-Recording Server (Figure 5-21). Click the **Query** button to attempt connection to the GV-Recording Server. When the connection is established, the camera options will be displayed in the Preview and Record drop-down lists.
- Select one camera to be connected. The selections in the Preview and Record drop-down lists will be the same.
- Click **Apply**. The IP camera is added to the list.

- Click the listed camera, and select **Display Position** to map the IP camera to any channel on the GV-System. After the mapping is complete, the Status column will display "Connected".



- Click **OK** to exit all open dialog boxes. The IP camera from the GV-Recording Server is now displayed at specified channel.

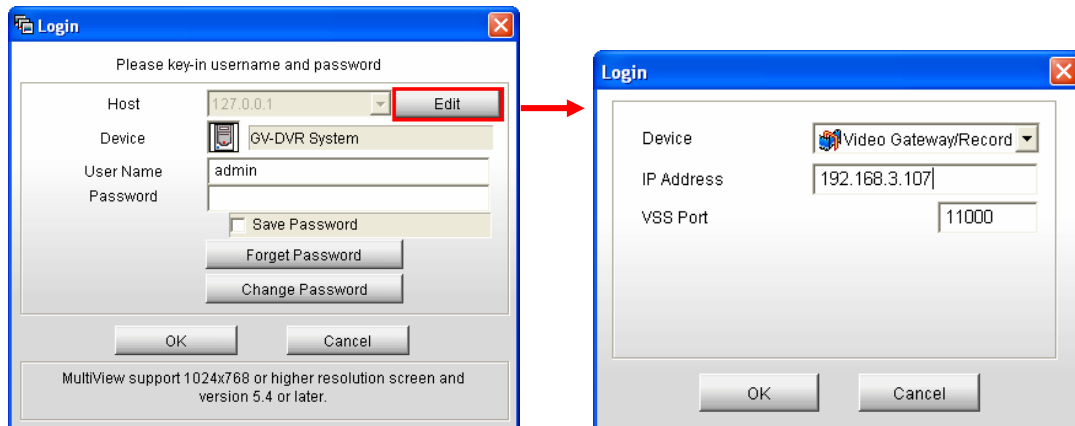
For details on GV-System, see *GV-DVR User's Manual* on Software DVD.

6.3 Connecting with the Multi View

You can find the Multi View from the Software DVD. Click **2. Install GeoVision Primary Applications** to access the installation program.

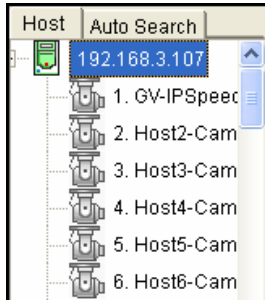
After installing the program, you need to log in the Multi View to access video streaming from the GV-Recording Server.

- In the login dialog box, click the **Edit** button. This dialog box appears.



- Select **Video Gateway / Recording Server** from the Device drop-down list.
- Type IP address or domain name of the GV-Recording Server.

4. Keep the default VSS Port as 11000 or modify it to match the TCP/IP port on the GV-Recording Server.
5. Click **OK** to return to the login page.
6. Type the client's username and password created on the GV-Recording Server.
7. Click **OK** to log in.
8. The GV-Recording Server will be listed under the Host list. Drag and drop its IP cameras to the desired channels on the Multi View.

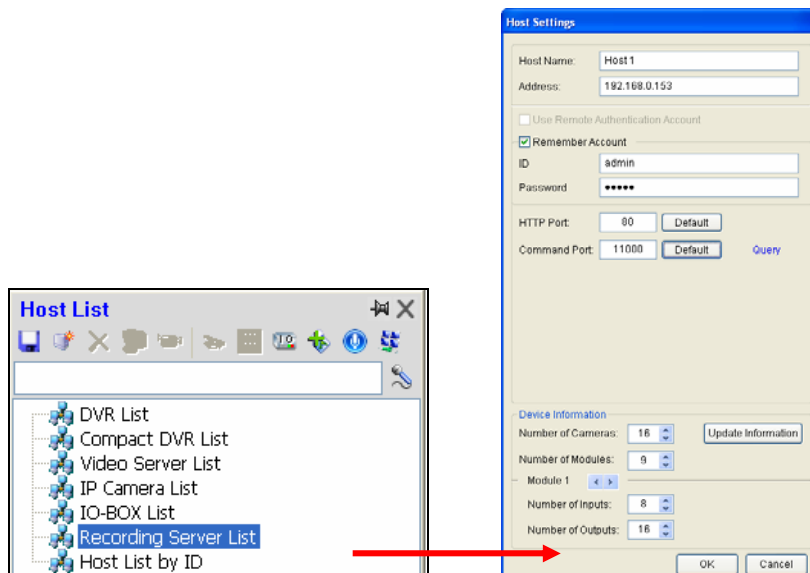


For details on the Multi View functions, see “Multi View Viewer”, Chapter 8 Remote Viewing, *GV-DVR User's Manual* on Software DVD.

6.4 Connecting with the GV-Control Center

You need to configure the GV-Control Center to access video streaming from the GV-Recording Server. You can find the GV-Control Center from the Software DVD. Click **2. Install GeoVision Primary Applications** to access the installation program.

1. On the Host List of GV-Control Center, right-click **Recording Server List** and select **Add Recording server**. The Host Settings dialog box appears.



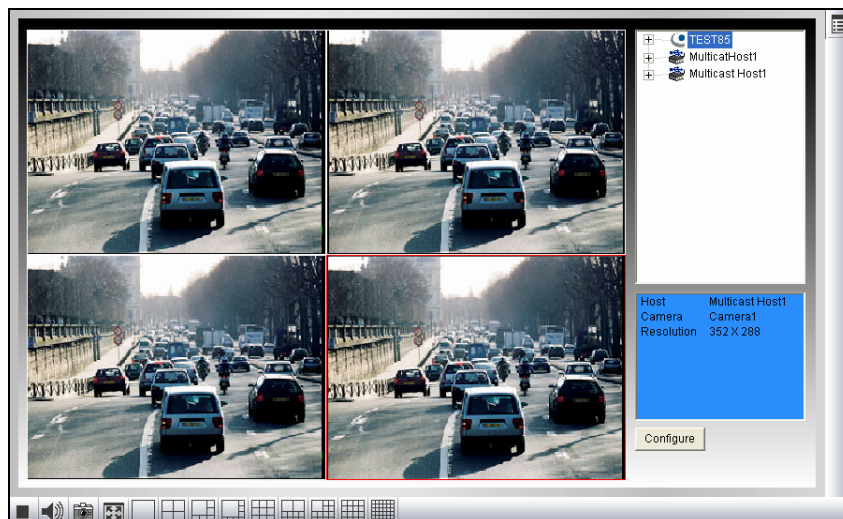
2. Name the host of GV-Recording Server.
3. Type the IP address or domain name of the GV-Recording Server.
4. Type the client's username and password created on the GV-Recording Server.
5. Keep the communication ports as default settings; otherwise modify them to match the HTTP (default value: 80) and TCP/IP (default value: 11000) ports on the GV-Recording Server.
6. Click the **Update Information** button to request the number of cameras from the GV-Recording Server. When the update is complete, the message "*Update system information successfully*" will appear.
7. Click **OK**. The host is created under the Recording Server List.

For details on GV-Control Center, see *GV-Control Center User's Manual* on Software DVD.

6.5 Connecting with Multicast

The Multicast view allows you to receive video and audio streams from a multicast group. You need to first enable the multicast function. See 5.3.5 *Video Gateway* in the *GV-Recording Server User Manual* for details.

You can find the Multicast from the Software DVD. Click **2. Install GeoVision Primary Applications** to access the installation program.






1. The host(s) in the multicast group is displayed automatically. If not, click the **Configure** button, select **General Setup**, select **Multicast** and ensure the settings are correctly configured.

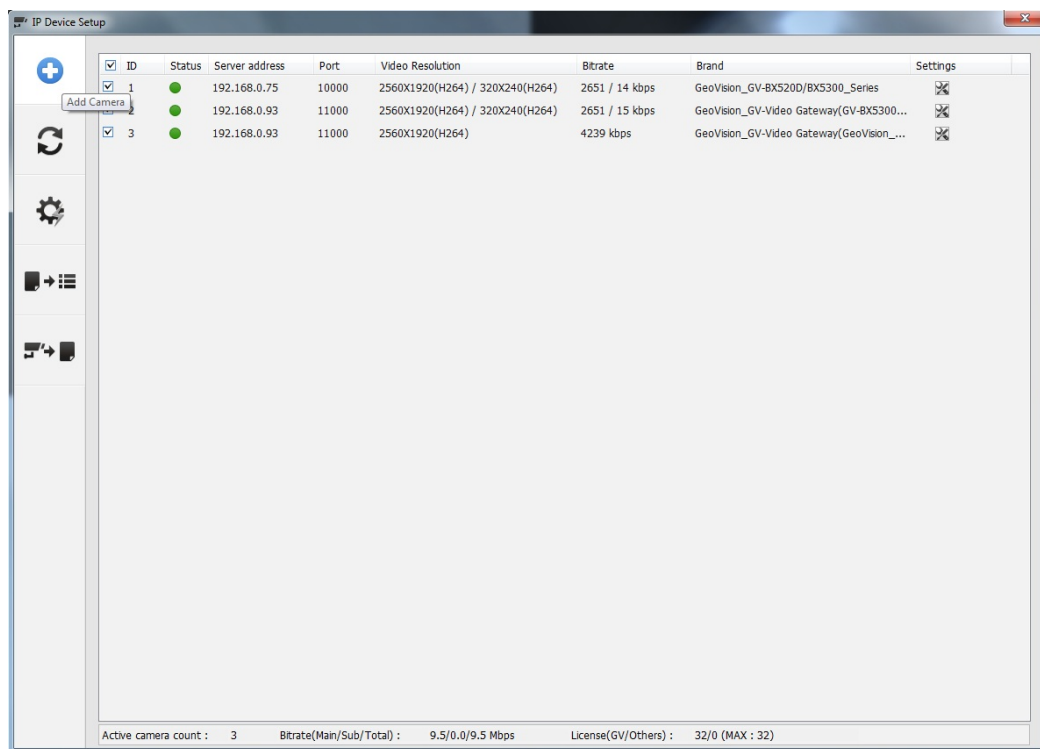
2. Expand the Host folder and drag the cameras to the screen for display. If the host has already set a password, you will be promoted to enter it.
3. To receive audio broadcasting, first ensure a speaker is properly installed. Then click the **Configure** button, select **General Setup**, select **Receive broadcast audio**, and ensure the broadcast IP address and port number are correctly configured.
4. To save the current settings of screen division and camera display for future use, click the **Configure** button, select **Video List Setup**, and select **Export**.

For details on the Multi View functions, see “Multi View Viewer”, Chapter 8 Remote Viewing, *GV-DVR User's Manual* on Software DVD.

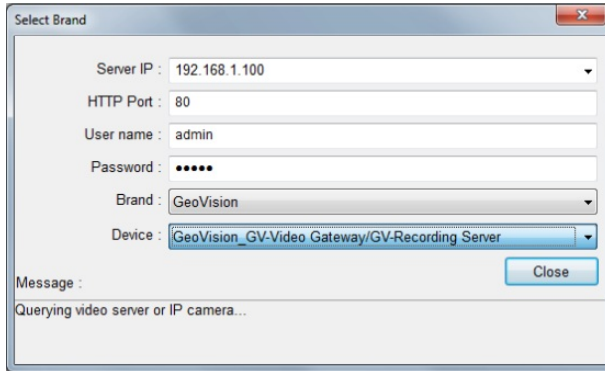
6.6 Connecting with the GV-VMS

You need to configure the GV-VMS to access video streaming from the GV-Recording Server. You can find the GV-VMS from the Software DVD. Click **2. Install GeoVision Primary Applications** to access the installation program.

1. To access the IP Device Setup page, click **Home** , select **Toolbar** , click **Configure**  and select **Camera Install**.



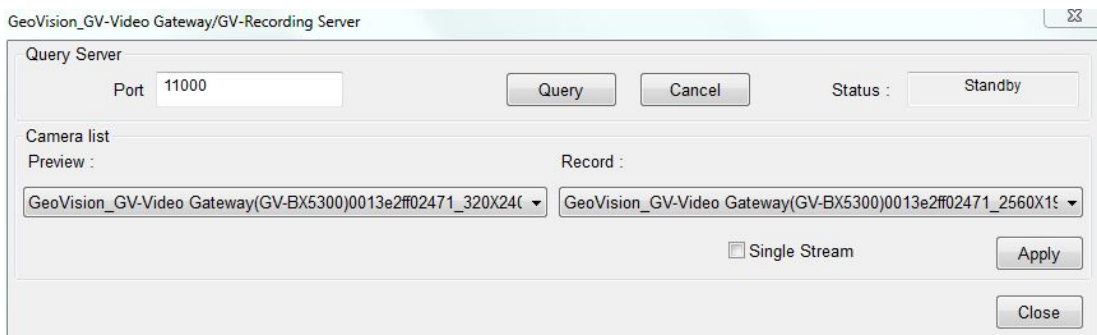
- Click **Add Camera** . This dialog box appears.



The 'Select Brand' dialog box contains the following fields and options:

- Server IP : 192.168.1.100
- HTTP Port : 80
- User name : admin
- Password : •••••
- Brand : GeoVision
- Device : GeoVision_GV-Video Gateway/GV-Recording Server
- Message : Querying video server or IP camera...
- Close button

- Type the IP address, username and password of the GV-Video Gateway / GV-Recording Server. Modify the default HTTP port **80** if necessary. Select **GeoVision** and model name from the **Brand** drop-down list and select the GV-Video Gateway / GV-Recording Server model from the **Device** drop-down lists. The following dialog appears.



The 'GeoVision_GV-Video Gateway/GV-Recording Server' dialog box contains the following fields and options:

- Query Server Port : 11000
- Query button
- Cancel button
- Status : Standby
- Camera list Preview :
- Record :
- GeoVision_GV-Video Gateway(GV-BX5300)0013e2ff02471_320X240
- GeoVision_GV-Video Gateway(GV-BX5300)0013e2ff02471_2560X1920
- ☐ Single Stream
- Apply button
- Close button

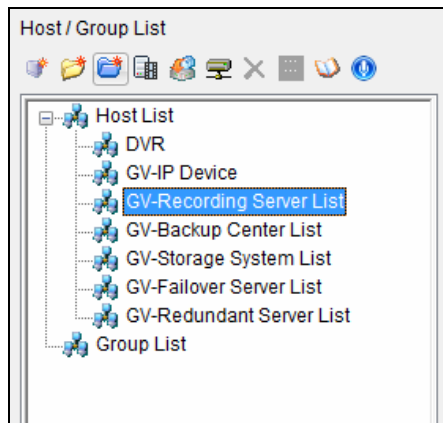
- Click the **Query** button to attempt connection to the GV-VideoGateway / GV-Recording Server. When the connection is established, the camera options will be displayed in the Preview and Record drop-down lists.
- Select one camera to be connected. The selections in the Preview and Record drop-down lists will be the same.
- Click **Apply**. The IP camera is added to the list.

For details on GV-VMS, see *GV-VMS User's Manual* on Software DVD.

6.7 Connecting with the Remote ViewLog

The files recorded on the GV-Recording Server can be played back remotely using the GV-Remote ViewLog. You can find the GV-Remote ViewLog from the Software DVD. Click **2. Install GeoVision Primary Applications** to access the installation program.

1. On the main screen of Remote ViewLog, click the **Tools** button and select **Address Book**. This dialog box appears.

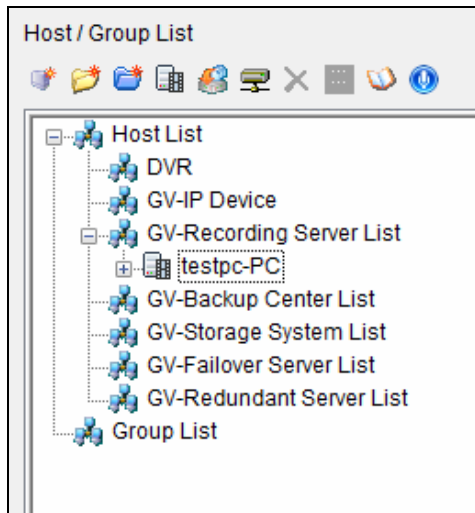


2. Click **Add GV-Recording Server** button. This dialog box appears.



3. Type the **IP address** of the GV-Recording Server. Use the default connection port 5552 or modify to match the settings on GV-Recording Server.
4. Type the **ID** and **Password** of a GV-Recording Server user account.
5. To add the GV-Recording Server to address book under a group, select a **Group Name** or type a new name.

- Click **OK** and the GV-Recording Server is now added to the address book.



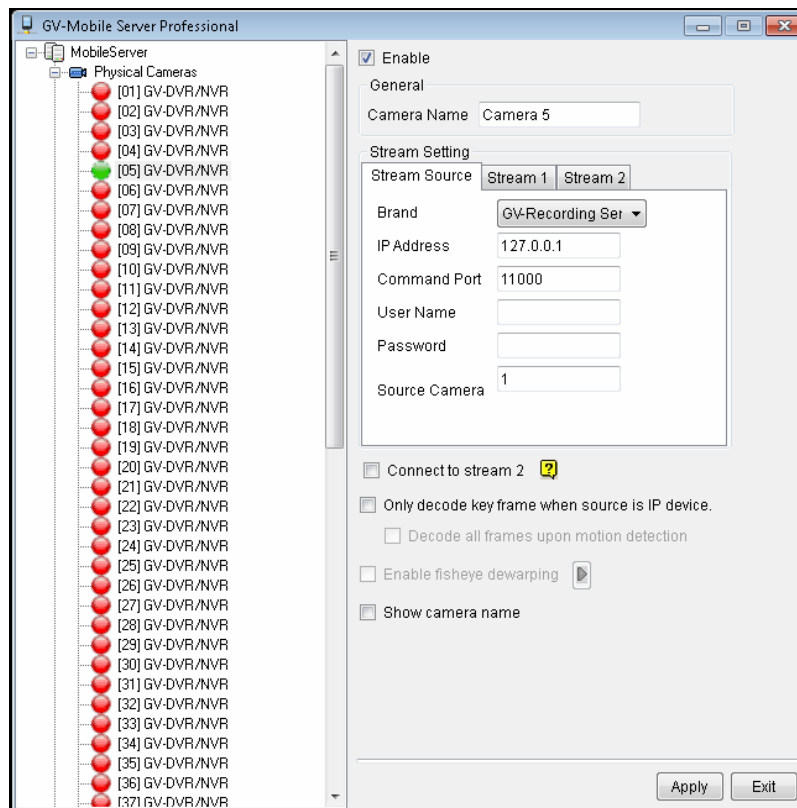
- Select an IP video device listed under the GV-Recording Server and click the **Connect** button. The ViewLog player appears and recorded events will be listed for playback.

For details on GV-Remote ViewLog, see *Chapter 3 Video Playback, GV-DVR User's Manual* on Software DVD.

6.8 Connecting with the GV-Mobile Server

You need to configure the GV-Mobile Server to access video streaming from the GV-Recording Server. You can find the GV-Mobile Server from the Software DVD. Click **2. Install GeoVision Primary Applications** to access the installation program.

1. From the left menu, select a camera and click the **Stream Source** tab. This window appears.



2. Type a name to describe the camera in the **Camera Name** field (Max. 31 characters).
3. Select **GV-Recording Server** for **Brand**.
4. Type the **Command Port**, **IP Address**, **User Name** and **Password** of the GV-Recording Server. The default command port for GV-Recording Server is **11000**.
5. Type the camera number for live viewing in **Source Camera**. The default setting is 1.
6. Click **Apply**.

For details on GV-Mobile Server, see *GV-Mobile Server User's Manual* on Software DVD.